

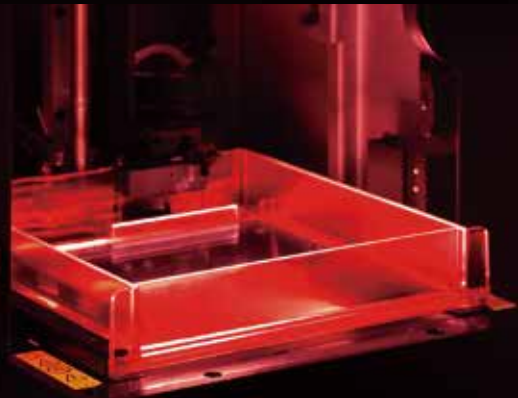


# PartPro150 xP

**Accelerate Ideas**

## Enlarged Build Area Ideal for More Applications

With a build area of 150 × 150 × 200 mm and a X/Y resolution of 130 microns, the PartPro150 xP is a SL printer ideal for producing parts which require smooth surface finishes.

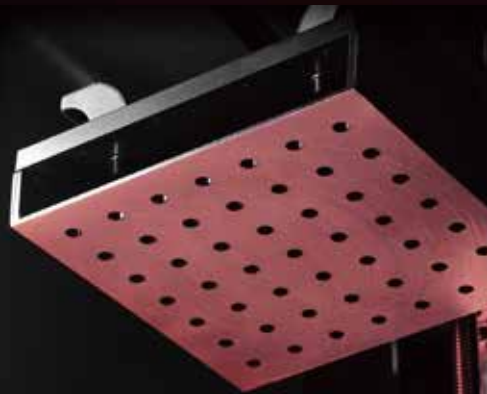


## Precision Components & Long-life Tank

Heated resin system with a wiper provides stable production throughout the printing process. The PDMS tank features a patent-pending coating, that ensures a long-life and enables higher productivity.

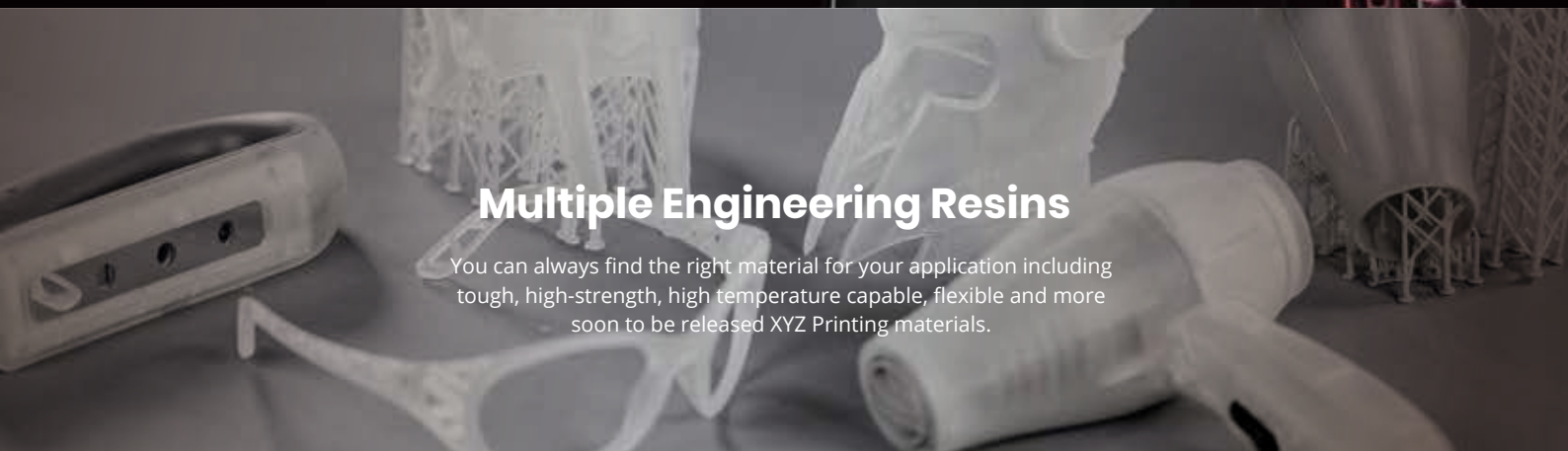
## Hands-free Auto-calibration

The PartPro150 xP features an auto-calibration that detects the positioning of the print platform and the resin tank. Simply load the resin to start the print.



## Multiple Engineering Resins

You can always find the right material for your application including tough, high-strength, high temperature capable, flexible and more soon to be released XYZ Printing materials.



## Specifications

|                                |                                  |                                   |   |
|--------------------------------|----------------------------------|-----------------------------------|---|
| <b>Print Technology</b>        | SL (Stereolithography Apparatus) | <b>Display Language</b>           | Multilingual  |
| <b>Max. Build Area (WxDxH)</b> | 150 × 150 x 200 mm               | <b>Printing Software</b>          | XYZprintAM <sup>UV</sup>  |
| <b>Layer Resolution</b>        | 25 / 50 / 100 / 200 microns      | <b>Operating Systems</b>          | Windows 7 / 8 / 8.1 / 10 (64 bit)<br>MAC OS X 10.10 / 10.11 / 10.12 / 10.13 |
| <b>X-Y Resolution</b>          | 130 microns                      | <b>Power Requirements</b>         | 100V - 240V 60W   |
| <b>Supported File Formats</b>  | .stl / XYZ format (.3ws / .3wn)  | <b>Connectivity</b>               | USB 2.0 Cable / Wi-Fi / Ethernet  |
| <b>Light Source</b>            | UV LED λ 405nm                   | <b>Product Dimensions (WxDxH)</b> | 280 x 337 x 595 mm  |
| <b>Material Compatibility</b>  | ProBasic CLR / ProPlasSL         | <b>Product Weight</b>             | 13 kg   |
| <b>Display</b>                 | 5" Touch panel LCD               |                                   |   |

All price, feature and specification are subject to change without prior notice.